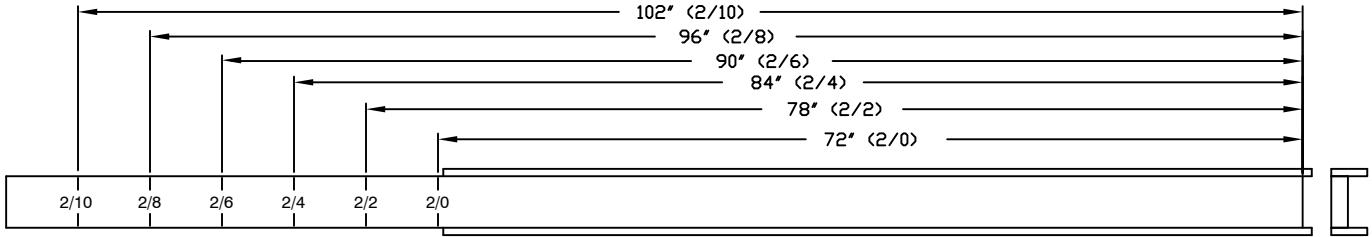


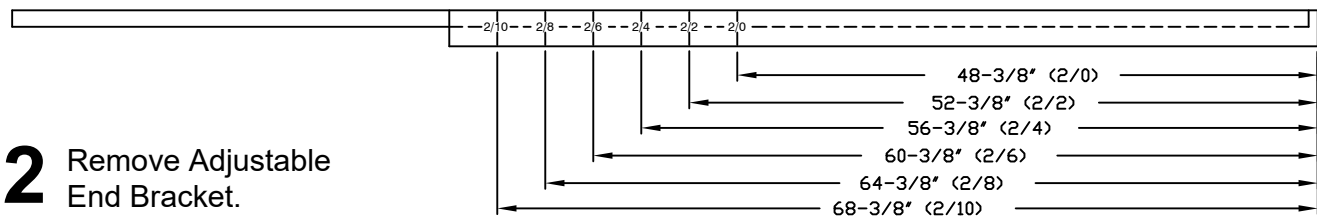
INSTRUCTIONS

1562 SERIES

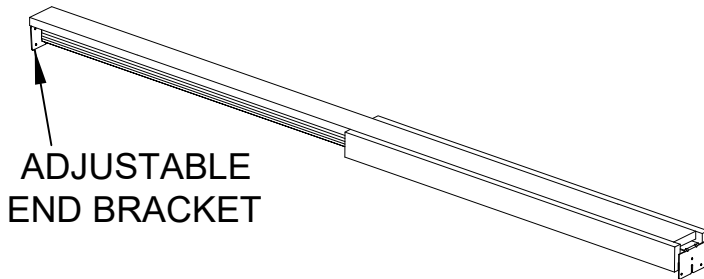
Cutting Instructions-Johnson Hardware Pocket Door Frame Header



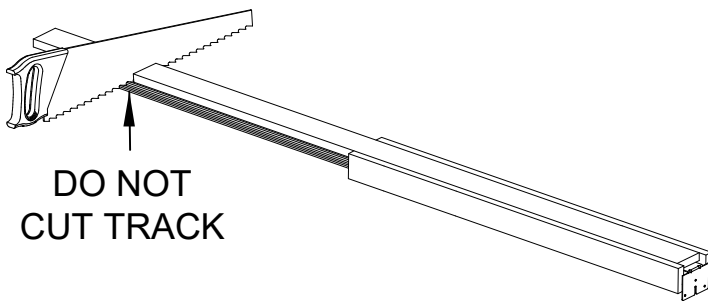
1 Mark Header and Side Nailers for door size.



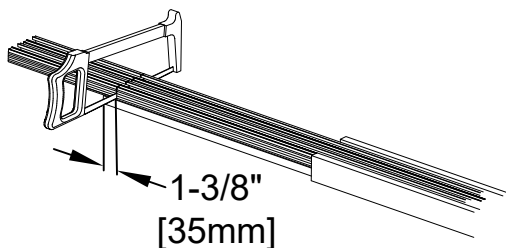
2 Remove Adjustable End Bracket.



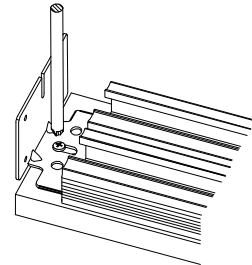
3 Cut through WOOD part of header only at mark.



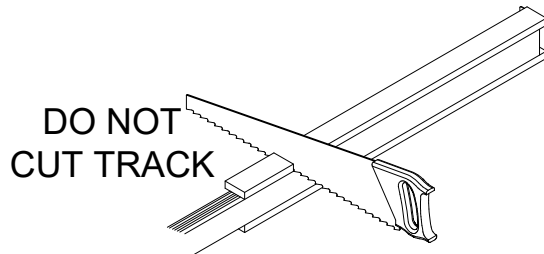
4 Turn Header over and cut Tracks 1-3/8" (19mm) shorter than wood Header.



5 Replace Adjustable End Bracket on new cut end of header.



6 Turn Header on side and cut 5/8" (16mm) Head Trim Board ONLY at mark. Remove cut off end and discard.



7 Turn Header and cut off other side.

