



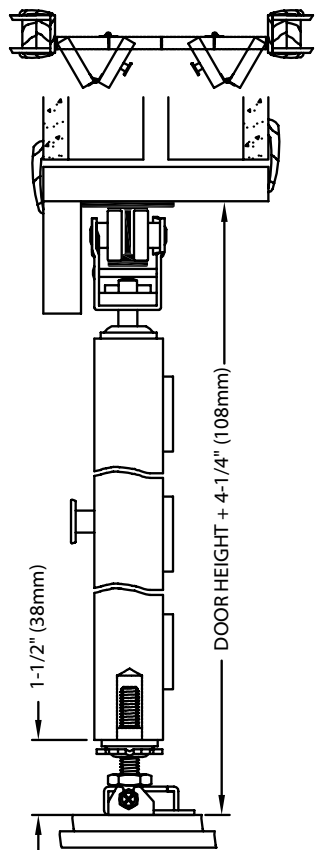
L.E. Johnson Products, Inc.
 2100 Sterling Ave.
 Elkhart, IN 46516
 Ph: (574) 293-5664
 Fax: (574) 294-4697
 info@johnsonhardware.com
 www.johnsonhardware.com



Engineered Excellence

200FD

Top Mounted Bifold Hardware
 for 1 1/8" to 1 3/4" Thick Panels to 125 lbs. (57KG) per Panel



A deluxe commercial grade, folding door hardware set designed for use with heavy 1 1/8" to 1 3/4" thick doors weighing up to 125 lbs. per door panel. You can hang individual panels that are up to 4/0 x 9/0.

The 200FD is one of the finest commercial grade folding door hardware systems made. It is ideal for commercial and architectural applications where quality, trouble free operation and long life is a necessity.

The heavy-duty I-beam track is made to the most precise specifications, and the four-wheeled (1" diameter) ball-bearing hangers are manufactured with Johnson's lifetime warranty in mind. The 200FD track is available in lengths up to 16 ft.



200FD Exceptional Features

Aluminum I-Beam Track

Strong aluminum track is precision extruded. I-beam design assures heavy duty support and smooth operation in conjunction with the ball-bearing wheels used on the 2002 guide.

Four-Wheeled Hangers

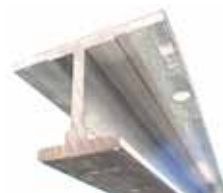
Large, 1" diameter nylon wheels with ball-bearing design means smooth rolling and long life. Built-in height adjustment for ease of installation.

Heavy-Duty Pivots

The 2007 Bottom Pivot and the 2011 Floor Bracket are designed to hold heavy bifolding doors firmly in place.

Complete Hardware Set

200 Track



2001 Top Pivot



2002 Guide



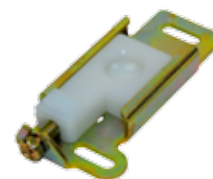
2010 Pivot Lock



2007 Bottom Pivot



2011 Floor Bracket



1808 Door Aligner



37 Knob



1712 Wrench
 Plus all screws and instructions



See online at: www.johnsonhardware.com/200fd.htm



200FD Installation Overview

PREPARE OPENING CAREFULLY: MAKE SURE CORNERS ARE SQUARE,
HEADER IS LEVEL AND JAMBS ARE STRAIGHT.

PREPARE LA ABERTURA CON CUIDADO: ASEGÚRESE QUE LAS ESQUINAS, ESTÉN EN ESCUADRA,
QUE LA CABECERA ESTE NIVELADA, Y QUE LAS JAMBAS ESTÉN RECTAS.

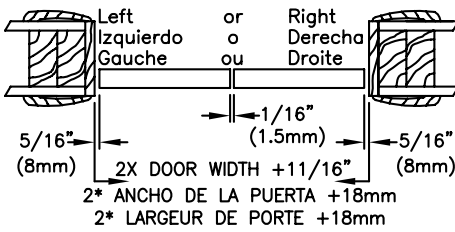
PREPAREZ L'OUVERTURE AVEC PRECAUTION: ASSUREZ VOUS QUE LES COINS SONT A ANGLE DROIT,
QUE LE LINTEAU EST A NIVEAU ET QUE LES MONTANTS SONT DROITS.

Minimum Hinge Size: 3" X 3" Mortised Hinge 50 lbs. each.

Dimension minimale de la charnière: 75mm X 75mm charnière encastrée de 23 kg. chaque.

Tamaño mínimo de la bisagra: 75mm X 75mm bisagra de muesca 23 kg. cada.

2 DOOR, PUERTA, PORTE



4 DOOR, PUERTA, PORTE

