

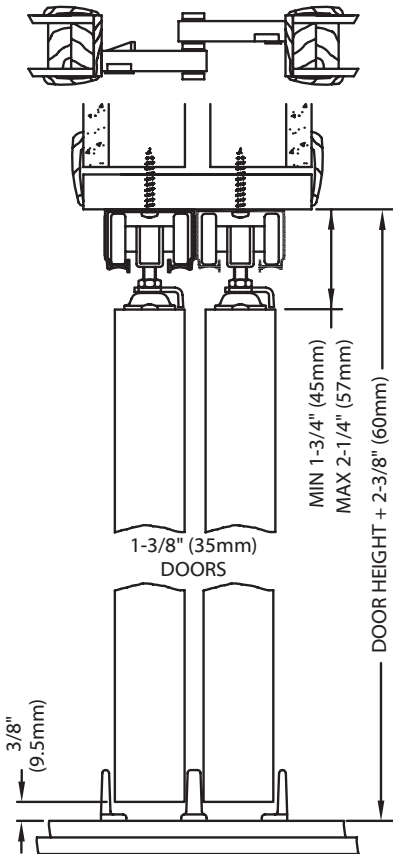


L.E. Johnson Products, Inc.
 2100 Sterling Ave.
 Elkhart, IN 46516
 Ph: (574) 293-5664
 Fax: (574) 294-4697
 info@johnsonhardware.com
 www.johnsonhardware.com



100SD

Commercial Bypass Track and Hardware
 for 1" or Thicker Panels to 200 lbs. per Panel



The 100SD is a highly adaptable hardware set designed for residential and light commercial sliding door applications where quality, trouble-free operation and long life is a necessity. 100SD separate and independent track extrusion accommodate various door thicknesses allowing maximum installation flexibility. The 100SD can be purchased in pre-configured hardware sets for most standard door sizes or by individual parts for custom installations. Available package sets to 8', bulk by component with track to 16'.

100SD Exceptional Features

Adaptable Aluminum Track Design

Strong aluminum track is precision extruded. Available in clear mill finish. Attractive line design hides fingerprints, holds paint, and allows the use of different thickness doors by coming with two separate tracks. Convex

rails provide one point contact for wheels to ride on. Dirt traps on both sides allow hanger wheel to keep free from troublesome dust.

Balanced-Wheel Ball-Bearing Hangers

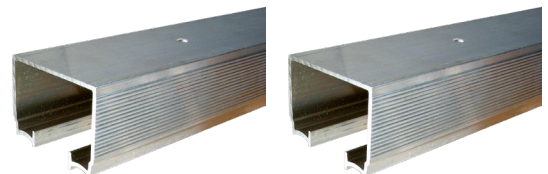
Tricycle hanger design gives even weight distribution to track rails, will not bind. Machine turned, balanced nylon wheels for feather touch operation. Height adjustment allows for changes in structure. Door mount or dismount with a flip of a clip.

Adjustable Door Guide

Doors are held in firm alignment by adjustable triple post nylon guides. The posts are adjustable for use with a wide range of door thicknesses.



Complete Hardware Set
 100SD Track(2 pieces per set)



101 Door Guide

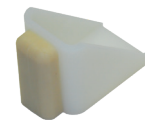
1125 Ball-Bearing Hanger



2155 Stop



30 Pull (2 1/8" dia.)



1155 Stop
 (4 Door Sets Only)



Plus all screws and instructions



Compatible with optional 1060 Soft Close Assembly



See online at: www.johnsonhardware.com/100SD.htm



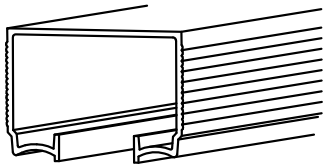
100SD Installation Overview

PREPARE OPENING CAREFULLY: MAKE SURE CORNERS ARE SQUARE, HEADER IS LEVEL AND JAMBS ARE STRAIGHT.

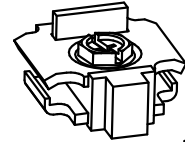
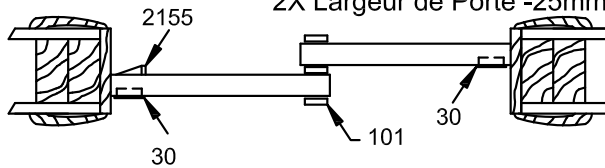
PREPARE LA ABERTURA CON CUIDADO: ASEGÚRESE QUE LAS ESQUINAS, ESTÉN EN ESCUADRA, QUE LA CABECERA ESTE NIVELADA, Y QUE LAS JAMBAS ESTÉN RECTAS.

PREPAREZ L'OUVERTURE AVEC PRECAUTION: ASSUREZ VOUS QUE LES COINS SONT A ANGLE DROIT, QUE LE LINTEAU EST A NIVEAU ET QUE LES MONTANTS SONT DROITS.

2 Door, Portes, Puertas: 2X Door width -1"
2X Ancho de la Puerta -25mm
2X Largeur de Porte -25mm

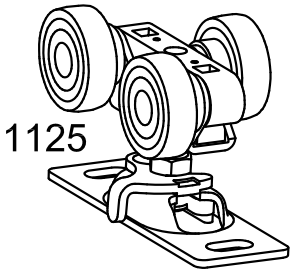


100

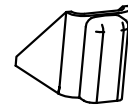
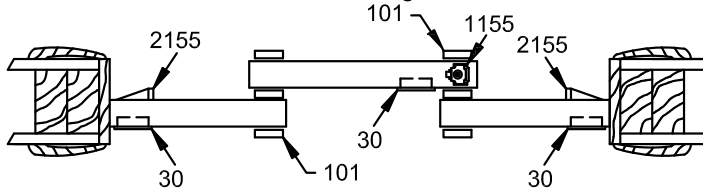


1155

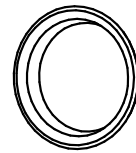
3 Door, Portes, Puertas: 3X Door width -2"
3X Ancho de la Puerta -50mm
3X Largeur de Porte -50mm



1125

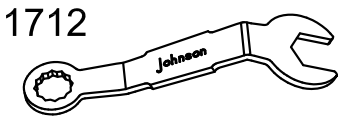


2155

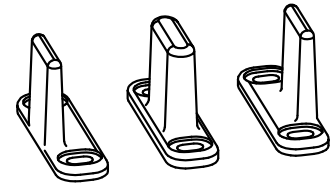
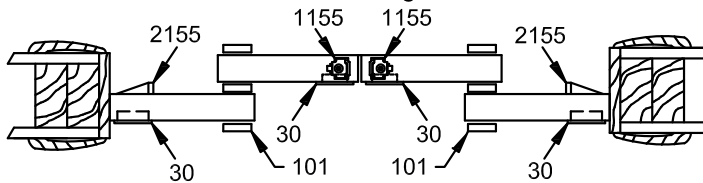


30

4 Door, Portes, Puertas: 4X Door width -2"
4X Ancho de la Puerta -50mm
4X Largeur de Porte -50mm



1712



101

