



the quality people

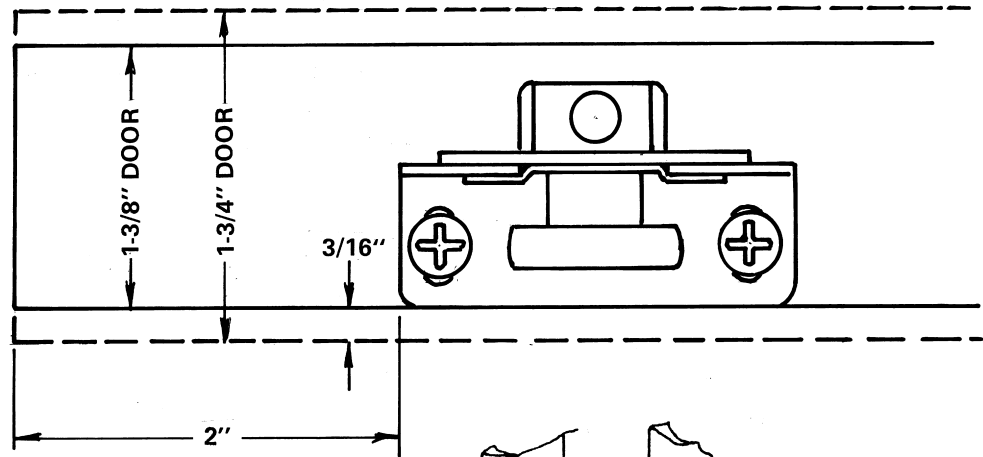
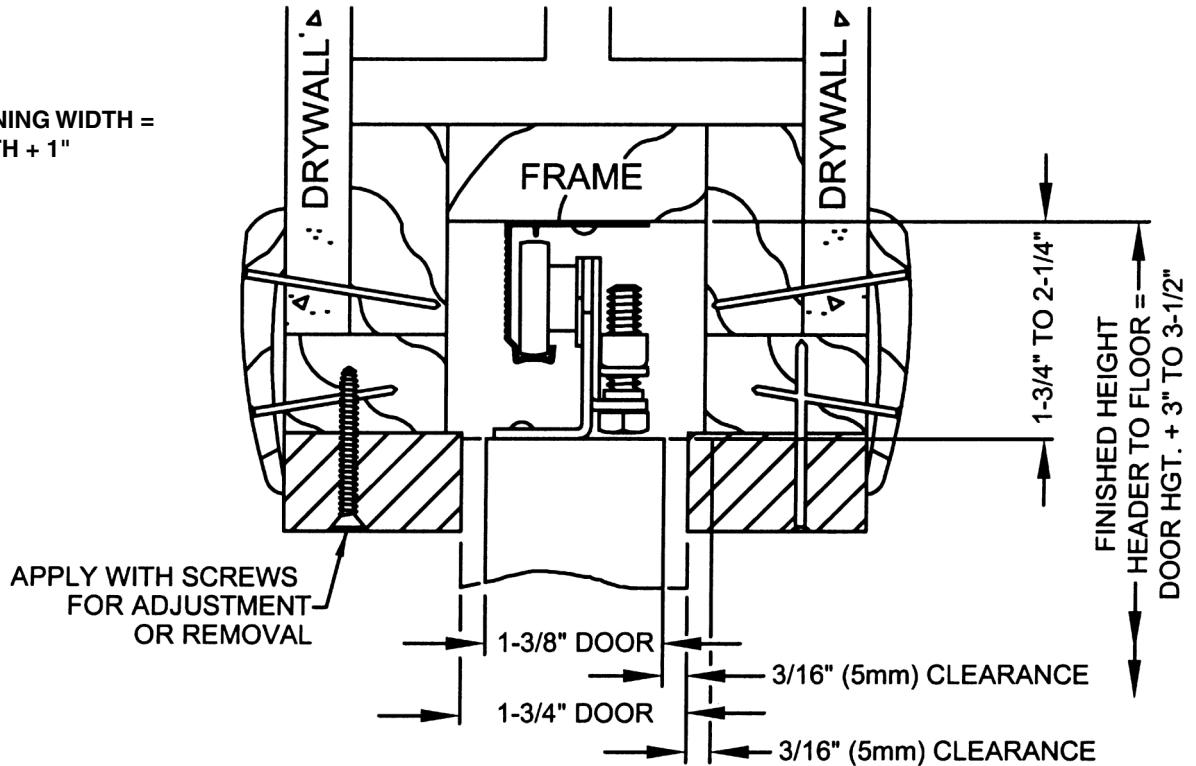
INSTRUCTIONS

For a 1 3/8" to 1 3/4" DOORS
UP TO 50 LBS.

2800-2850 PD Series Hardware for "Job Site" Pocket Doors

www.johnsonhardware.com

FINISHED OPENING WIDTH =
2 X DOOR WIDTH + 1"

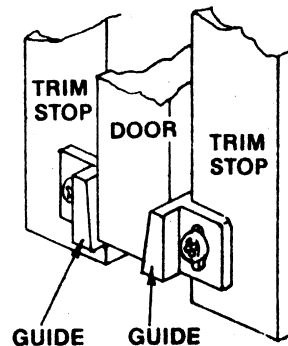


Fasten hangers 2" from each edge of door. Tilt top of door back and place hangers on track. Let door hang vertical and slip into pocket.

Apply stops, using screws on one side for future removal. Leave 3/16" clearance on all sides.

Fasten guides at bottom of door so that door glides easily without dragging.

Finish trimming casing and add pulls, etc.



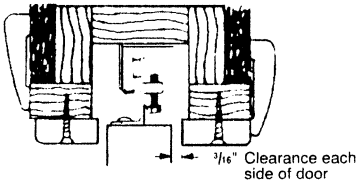
HOW TO CONSTRUCT A POCKET DOOR FRAME

- 1 Cut stock as shown in chart for desired door size:

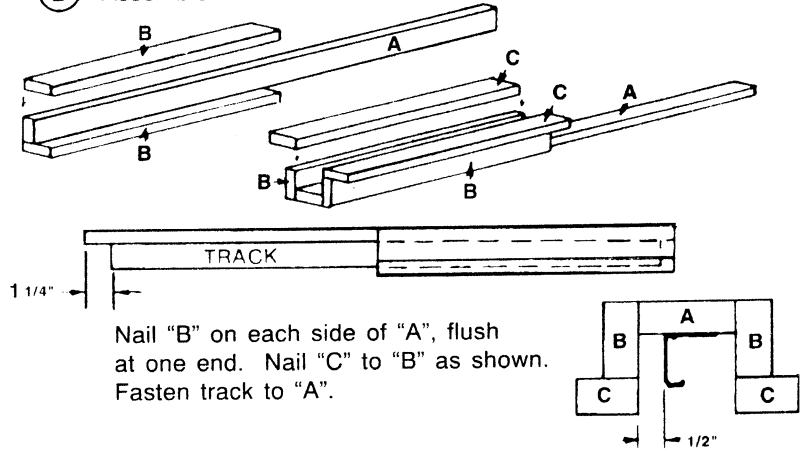
SET SIZE	24" DR.	28" DR.	30" DR.	32" DR.	36" DR.	PCS. EA. REQ.
	48	60	60	64	72	
TRACK LENGTH	45 1/2	53 1/2	57 1/2	61 1/2	69 1/2	1
A 3/4 X 2	48 3/4	56 3/4	60 3/4	64 3/4	72 3/4	1
B 3/4 X 1 5/8	24 7/8	28 7/8	30 7/8	32 7/8	36 7/8	2
C 3/4 X 1 5/16	24 7/8	27 7/8	30 7/8	32 7/8	36 7/8	2
D 3/4 X 3 1/2	23 7/8	27 7/8	29 7/8	31 7/8	35 7/8	10
E 3/4 X 2	23 7/8	27 7/8	29 7/8	31 7/8	35 7/8	1

WALL FRAME ASSEMBLY	6'8" DOOR HEIGHT	7'0" DOOR HEIGHT	PCS. EACH REQ.
F 3/4 X 2	83 7/8	87 7/8	1
G 3/4 X 1 5/16	82 1/4	86 1/4	2

SUGGESTED FINISH TRIMS

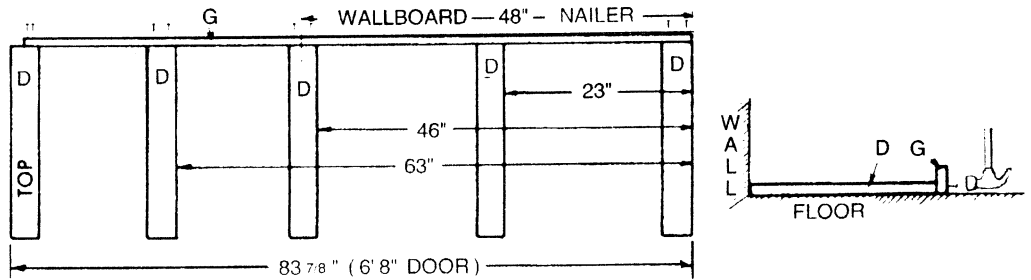


- 2 Assemble header.

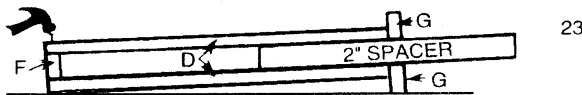


Nail "B" on each side of "A", flush at one end. Nail "C" to "B" as shown. Fasten track to "A".

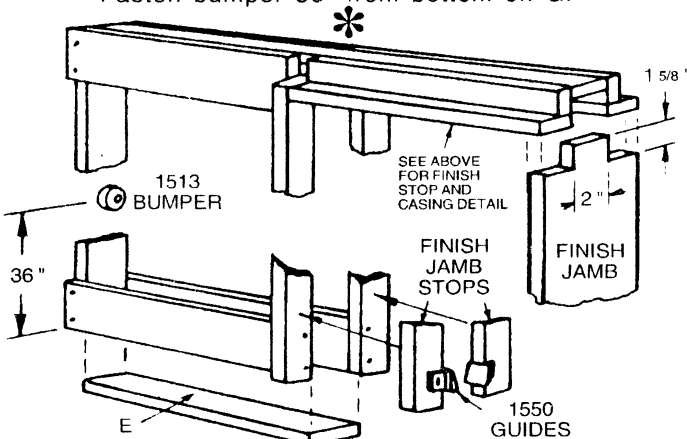
- 3 Assemble two side frames. Mark "G" as shown for location of side members "D" (Note: Center member is located to enable nailing of wall board if used in horizontal placement). Butt ends of "D"s against wall, or other firm surface, and nail G to D's. Repeat with other side, but measure from opposite end of G.



- 4 Place F between the two sides (Place 2" wide spacer between other side) and nail in place.



- 5 Insert E between sides at bottom of frame and nail in place. Position header assembly between sides at top of frame and "tack" in place until frame is in final position in wall. Fasten bumper 36" from bottom on G.



- 6 Place assembled frame into wall opening and fasten temporarily in position. Shim to obtain perfect plumbness of front edge and absolute level of track. (Door will not stay open or closed if track is not level). Finish nailing frame and header in place. Notch end of finish jamb as shown, slip into header and fasten to studs.

- 7 Mount hangers on top of door. Tilt door and hang on track. Check for proper operation of door. When gliding satisfactorily, screw finish jamb stop to frame (G) and fasten 1550 Guides at bottom. Apply wall materials to outside of frame using nails that will not penetrate pocket opening. Screw finish head stops in place and apply casing around opening as desired.

