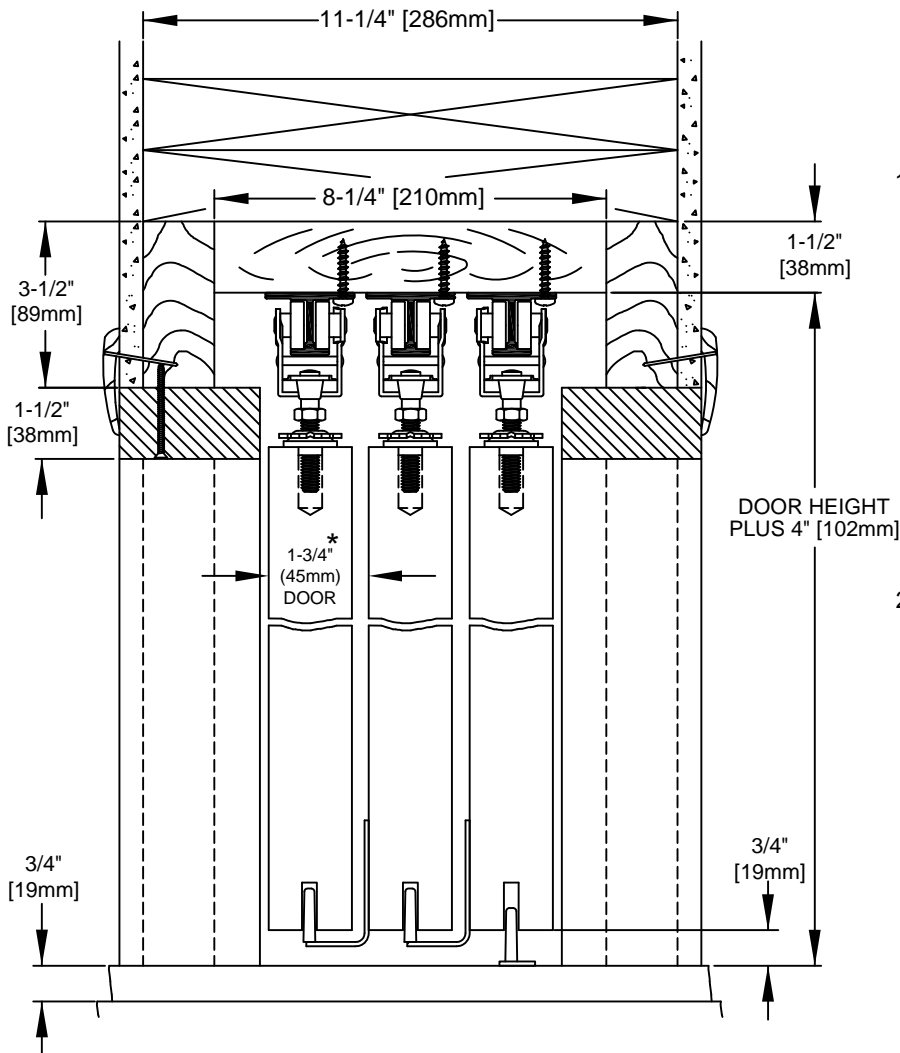
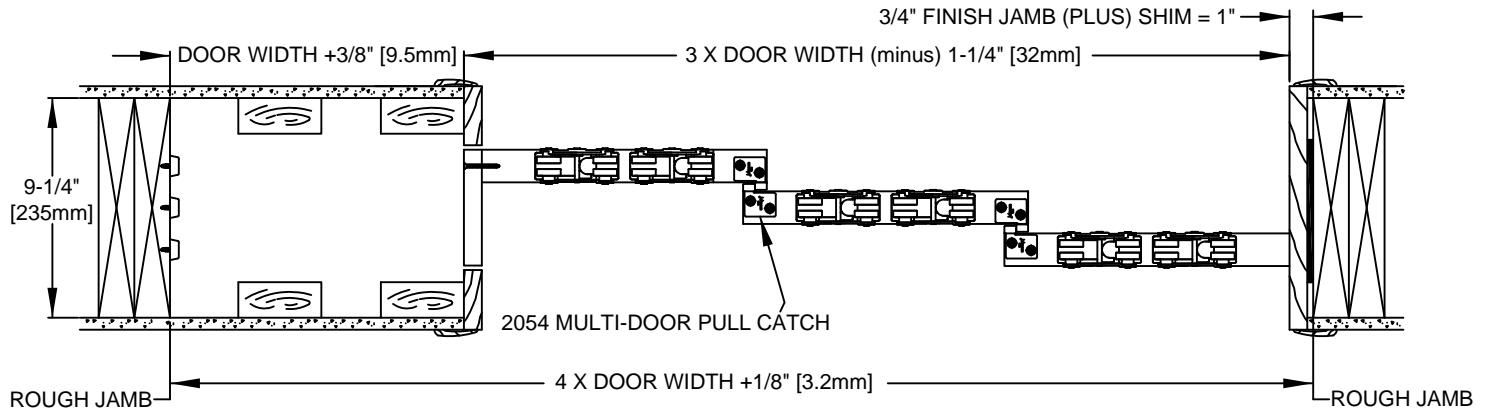




INSTRUCTIONS

MULTI-PASS POCKET DOOR 200PD SERIES W/2030

www.johnsonhardware.com



JOHNSON 200 SERIES 1-3/4" (45mm) DOORS

1-3/4" (45mm) DOOR REQUIRES A 2 X 12 STUD WALL
REQUIRES 1/4" (6.4mm) SPACE BETWEEN TRACKS

200PD SERIES NECESSARY COMPONENTS

- 3 - 200 SERIES TRACKS
- 2 - 2055 STOPS
- 3 - 1513 BUMPER
- 2 - 2054 PLBG MULTI-DOOR PULL CATCH
- 6 - 2020 HANGERS
- 2 - 2033 1-3/4" (45mm) SM BOTTOM DOOR GUIDE
- 1 - 2030 SINGLE FLOOR GUIDE

JOHNSON 200 SERIES 2-1/4" (57mm) DOORS

2-1/4" (57mm) DOOR REQUIRES A 2 X 12 STUD WALL
REQUIRES 3/4" (19mm) SPACE BETWEEN TRACKS

200PD SERIES NECESSARY COMPONENTS

- 3 - 200 SERIES TRACKS
- 2 - 2055 STOPS
- 3 - 1513 BUMPER
- 2 - 2054 PLBG MULTI-DOOR PULL CATCH
- 6 - 2020 HANGERS
- 2 - 2036 2-1/4" (57mm) SM BOTTOM DOOR GUIDE
- 1 - 2030 SINGLE FLOOR GUIDE

* 1-3/4" (45mm) & 2-1/4" (57mm) DOOR REQUIRES A 2 X 12 STUD WALL