

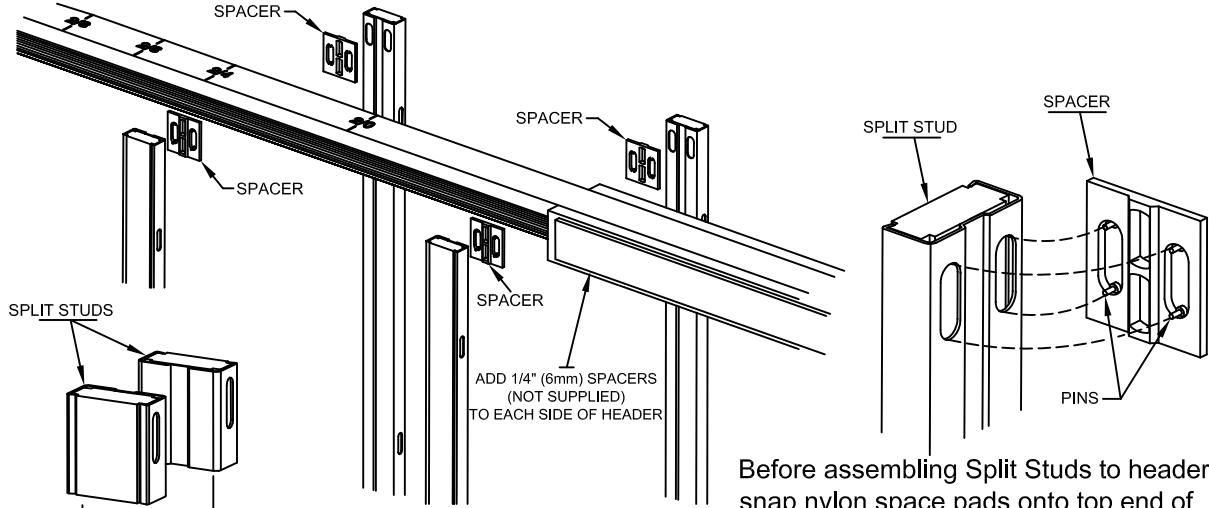


INSTRUCTIONS

FOR USE WITH JOHNSON
1500, 2000, 2511 SERIES
POCKET DOOR FRAMES ONLY

www.johnsonhardware.com

1580 POCKET DOOR FRAME ADAPTER KIT FOR 4" (100mm) STUD WALLS



Discard standard Floor Brackets and replace with 4" (100mm) Floor Brackets.

Before assembling Split Studs to header, snap nylon space pads onto top end of each stud. (Small pins fit into nailer slots and hold spacers in place). Nail studs into place as instructed in 1500 assembly instructions.