

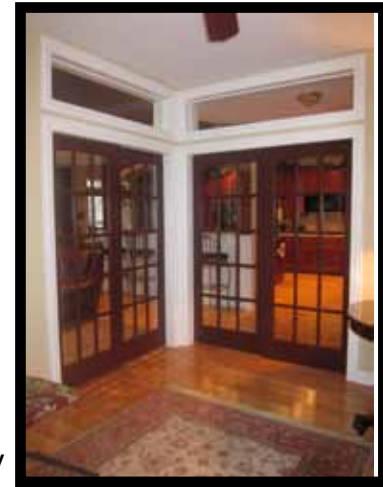
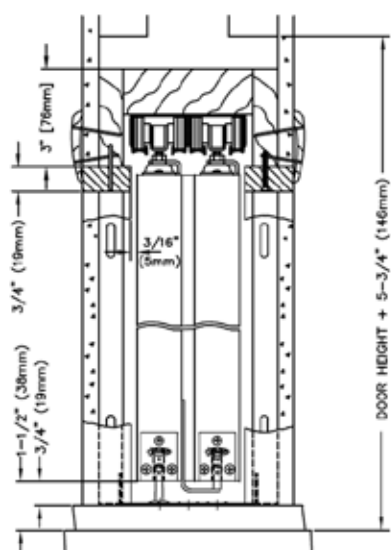


L.E. Johnson Products, Inc.
 2100 Sterling Ave.
 Elkhart, IN 46516
 Ph: (574) 293-5664
 Fax: (574) 294-4697
 info@johnsonhardware.com
 www.johnsonhardware.com



1562

Commercial Grade Bypass Pocket Door Frame
 for 1 3/8" Thick Doors to 200 lbs. (2" x 6" Stud Wall)



THE SPACE SAVER

The 1562 Series Bypass Pocket Door Frame is designed to carry 2 heavy, solid core, bypassing doors in a standard 2x6 stud wall. The 1562 allows architects and designers to specify large, room dividing openings with minimum wall obstruction for clean and open living spaces. The 1562 Frame Kit is configured to accept most standard door sizes and packaged for easy transport and fast installation in either bypass pocket door or converging bypass pocket door applications.



1562 Pocket Door Frame Features

STRONG STIFFENERS

Split jamb and stud uprights have full steel sides and backs to provide maximum rigidity for wall material and restricts nails from penetration into pocket. Slots allow room for easy nailing of trim stops.

SELF-ADJUSTING FLOOR ANCHORS WITH INTEGRATED SINGLE POST GUIDE

Long vertical fingers slide into split studs. This allows for settling of floor without disturbing horizontal alignment of and header and track. Plates include a groove and adjustable screw hole to accommodate a single post guide for precision guiding. An additional side mount guide is included to accommodate the 2nd door and allow for a "clean" floor.

REMOVABLE TRACK

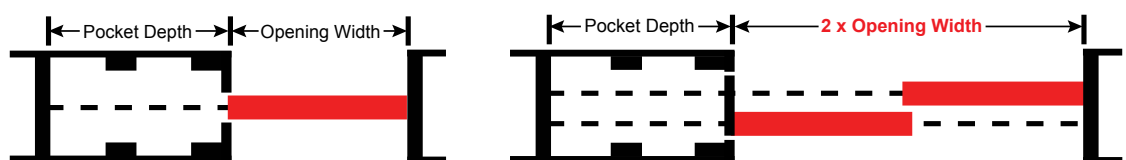
Track has keyhole slots for easy removal without tearing out walls. Box design prevents rollers from jumping track. Convex rails provide one-point wheel contact for smoothness and dirt traps for free rolling.

TRICYCLE HANGERS

Tri-design insures all wheels carry weight equally. Smooth rolling, balanced wheels ride with minimum friction on convex track rails. A "flip-of-a-clip" separates hangers from doors for easy door removal. The 1562 uses a 1" diameter ball-bearing wheel.

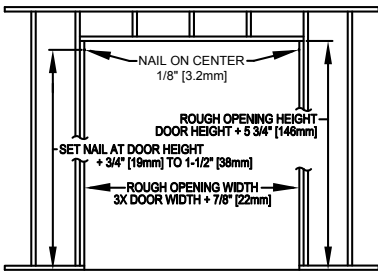
Standard Pocket Door Installation

Bypass Pocket Door Installation

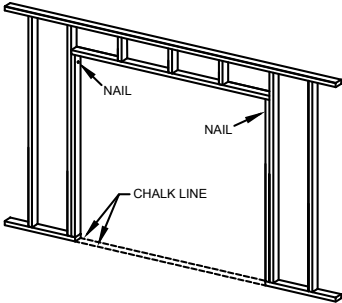


See online at: www.johnsonhardware.com/1562.htm

Johnson Hardware Pocket Door Frame Header Installation Instructions

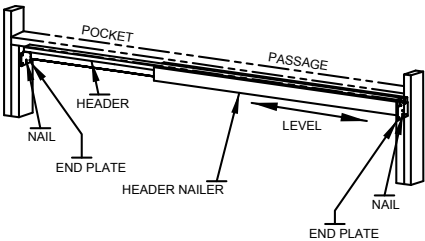


- 1 CONSTRUCT ROUGH OPENING:** Header must be **SQUARE** and **PLUMB** with studs and **LEVEL**. Minimum Height is Door Height 80" (2.03m) plus 5-3/4" (146mm). Rough Opening Width is 3X Door Width plus 7/8" (22mm).

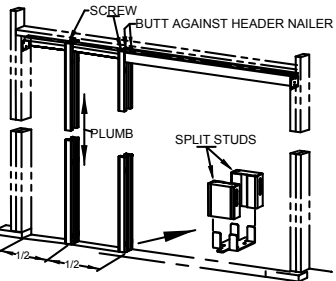


- 2 MEASURE** up from finished floor 80-3/4" (2.05m) or from sub-floor to 81-1/2" (2.07m). This will give 3/4" (19mm) to 1-1/2" (38mm) clearance under door. Mark each rough stud and drive a flat head nail on center, leaving 1/8" (3mm) protruding. (Frame header end brackets will rest on these nails).

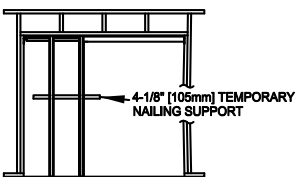
- 3 SNAP** a chalk line on floor even with side jambs.



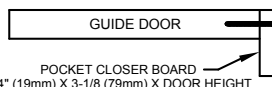
- 4 SLIP** slots in Frame Header End Plates over nails in rough studs. **LEVEL HEADER**. Set nails and drive nails through remaining holes in end plates.



- 5 SLIP** fingers of Floor Plate into Split Studs as shown. Screw one pair of studs flush to side of Side Nailer Boards of Header and the other pair midway in the pocket area. Plumb Split Studs between Chalk lines and nail or screw to floor. (On masonry, use industrial adhesive or Tapcon fasteners.)

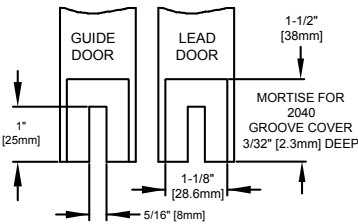


- 6 APPLY** desired wall material. Wall material is bought clear to edge of opening. **WARNING:** Use screws no longer than necessary. Screws must not protrude into pocket or doors will be damaged. To provide a firm surface, slip a 4-1/8" (105mm) wide board between Split Studs temporarily.



- 7 CUT** a clear board 3/4" (19mm) X 3-1/8" (79mm) X Door Height. This will be attached to back of Guide Door to close pocket when opening is closed.

- 8 ATTACH** Pocket Closer Board to back edge of Guide Door.

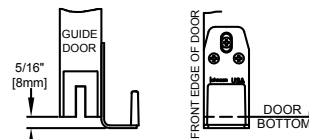


- 9 ROUTE** 5/16" (8mm) X 1" (25mm) groove in the center of each doors bottom rail.

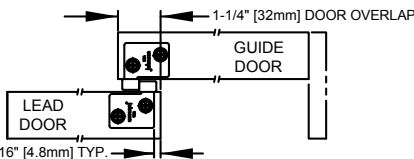
- 10 MORTISE** ends of Lead Door and front edge of Guide Door for 2040 Groove Cover. 1-1/8" (28.6mm) wide X 1-1/2" (38mm) high X 3/32" (2.3mm) deep.



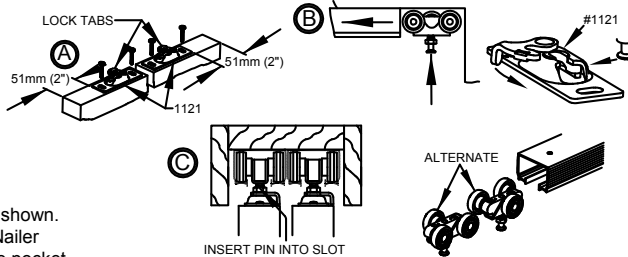
- 11 REMOVE** Pocket Closer Board from Guide Door and seal all edges and faces of doors and pocket closer board with paint or sealer stain.



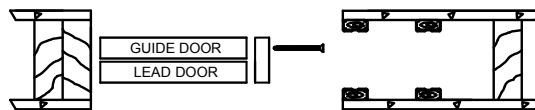
- 12 ATTACH** 2032 Side Mount Guide to front face of Guide Door on same side as the Pocket Closer Board extends pass door face.



- 13 ATTACH** 2054 Pull Catch to top front edge of Guide Door and top rear edge of Lead Door.

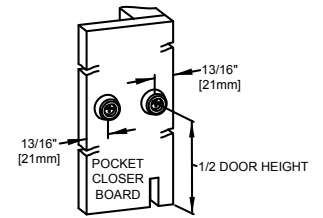


- 14 A/Attach** door plate 1121 on top of door 2" (50mm) from each edge with lock tab on same side.
B/ Insert 1125 hangers into tracks alternating wheel positions for even weight distribution.
C/ Mount Guide Door by first locating door plate 1121 under adjusting bolt of 1125 Hanger. Lift door and push bolt into door plate. Repeat with other hanger/door plate.
D/ Mount Lead Door next to Guide Door in same manner.

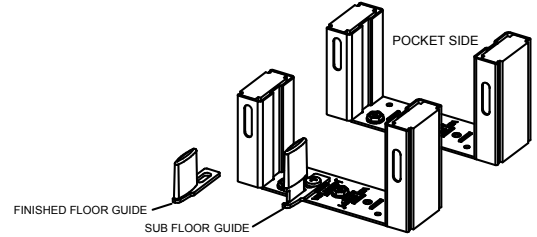


Note: Side Mount Guide must be in route groove of lead door.

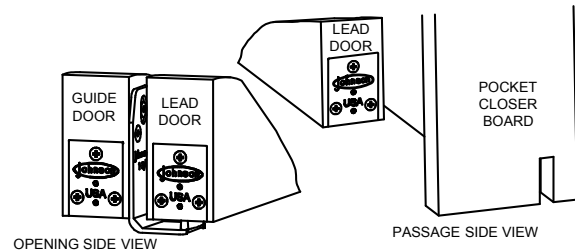
- 15 SLIDE** Guide Door and Lead Door to strike Jamb rough stud and reattach Pocket Closer Board to Guide Door.



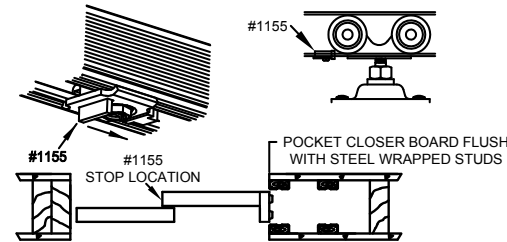
- 16 FASTEN** 1513 Bumpers to back of Pocket Closer Board 1/2 the door height from floor. 13/16" (21mm) from each edge.



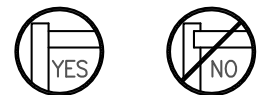
- 17 ATTACH** 2041 Guide to floor bracket at edge of pocket opening. Use tall Guide when frame is attached to sub floor or Short Guide when attached to finished floor. Be sure to mount the 2041 on the side you want as the Guide Door.



- 18 ATTACH** 2040 Route Groove covers in mortised area, both sides of the Lead Door and only the front side of the Guide Door.



- 19 SLIDE** 1155 Stop into Guide door track and adjust until the back edge of the Pocket Closer Board on the guide door is flush with the front edge of the steel wrapped studs.



- 20 INSTALL** finished jambs, split header and casing as shown. Fasten split header on 1121 lock lever side with screws for future door removal or adjustment. **DO NOT USE JAMBS WITH DADO'S.**

